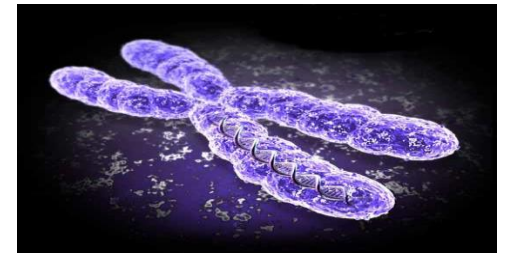


# Bio- and GenomeBank Denmark

## How was it established and how to collaborate



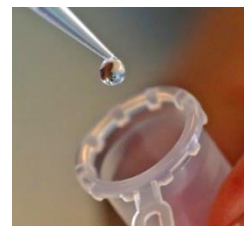
# Bio-and GenomeBank, Denmark - A history of 15 years

- **2005** The Danish National Board of Health recommend an infrastructure for clinical cancer research
- **2007** The Ministry of Health establish a fond of 88 mill Danish “kroner” for the infrastructure

**From one biobank to several biobanks and more biobanks in the pipeline**

**Financially anchored in the Danish Health Care System**

- **2010** Danish Regions grant kr. 8 mil for the period 2010
- **2011** Danish Regions grant kr. 8 mil for the period 2011
- **2012** Danish Regions grant kr. 10 mil for the period 2012
- **2013** Danish Regions grant kr. 13 mil for the period 2013
- **2017** Bio- and GenomeBank, Denmark is no longer a study but are now a part of the National Health Care strategy. Several biobank are included in the **National** infra-structure

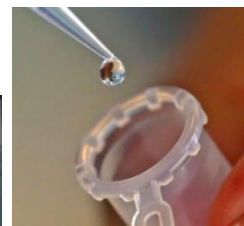


# Consideration for new Biobank

- Of value for the patient
- Potential for being national

**Based on one or more of these points, the basis of a biobank may be in place**

**An example is the Danish Covid19Biobank established in March 2020 (in 5 days)**



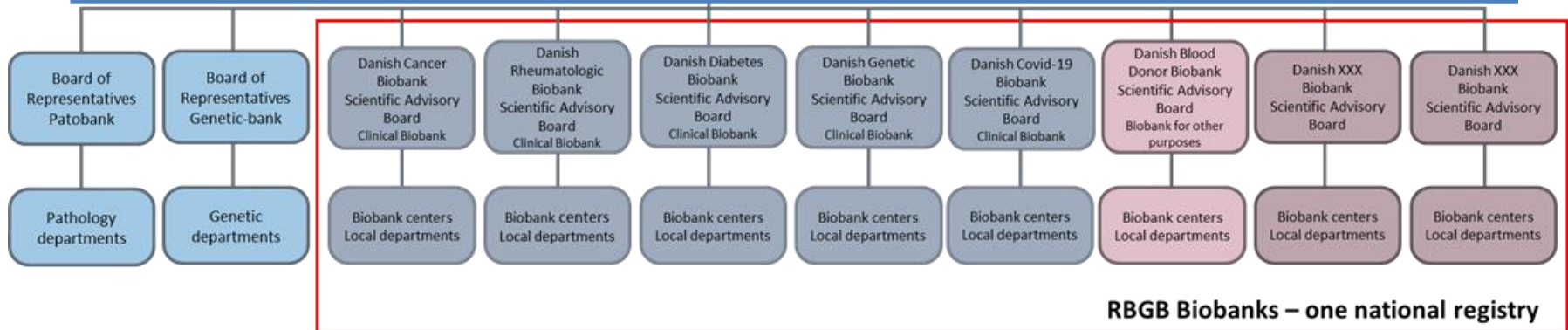
# Governance

Regional Directors of Health

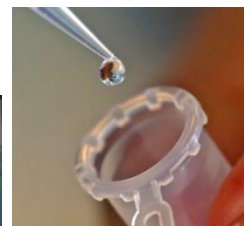
Steering Committee

The RBGB Secretariat  
The Secretariat for Pathology and Genetic Databank

**Health care Directors head and Danish hospitals collaborate**



*The RBGB Secretariat, April 2021*



# Which biobanks/which patients/expansion for RBGB?

**Danish CancerBiobank 2010**

&

**Danish RheumatologyBiobank 2015**

&

**Danish BlooddonorBiobank 2017**

&

**Danish DiabeticBiobank 2017**

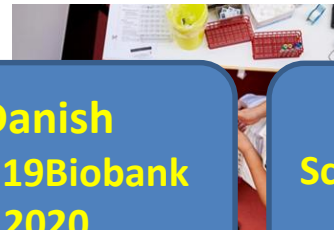
**Cancer**



**Rhematology**



**Healty persons**



**Diabetic**



**Danish GeneticBiobank 2020**

**Danish Covid19Biobank 2020**

**Danish ScreeningBiobank 2021**

**Danish XBiobank 2021**

**Danish XXBiobank 2021**

**Danish XXXBiobank 2021**

Diagnostic, survival and treatment should be improved

**National collection of biological material and data**  
biological medicine (2019).

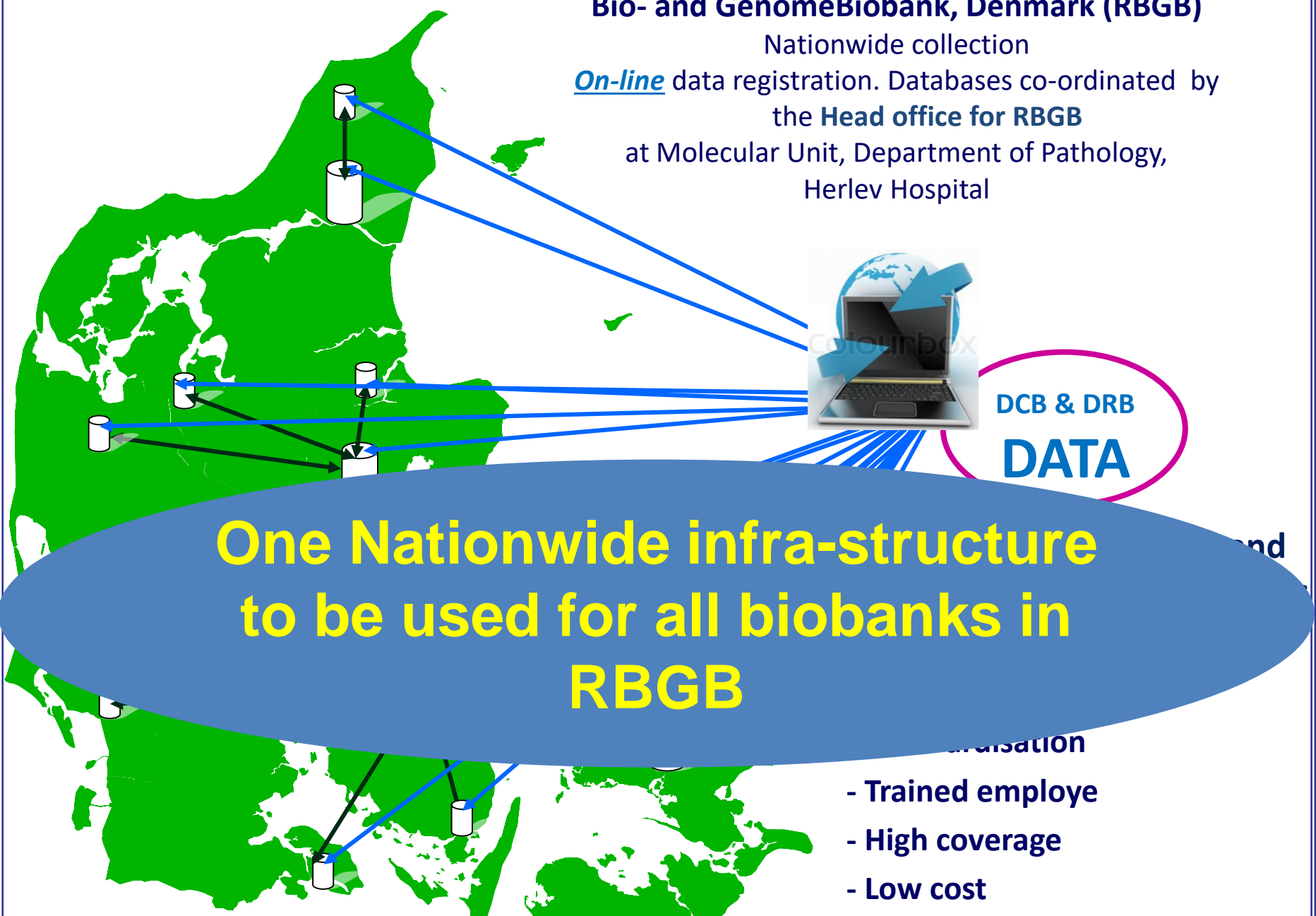
> 1,5 bil. DKr

To support possibilities for Precision medicine....

## Bio- and GenomeBiobank, Denmark (RBGB)

Nationwide collection

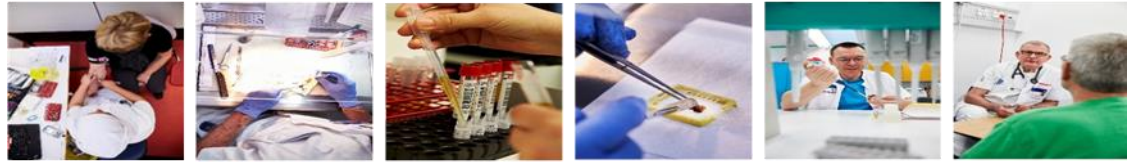
On-line data registration. Databases co-ordinated by  
the **Head office for RBGB**  
at Molecular Unit, Department of Pathology,  
Herlev Hospital



**One Nationwide infra-structure  
to be used for all biobanks in  
RBGB**

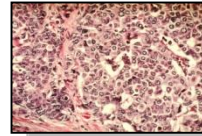
- Trained employe
- High coverage
- Low cost

# Sample flow - collaboration



Blood samples

Tissue samples

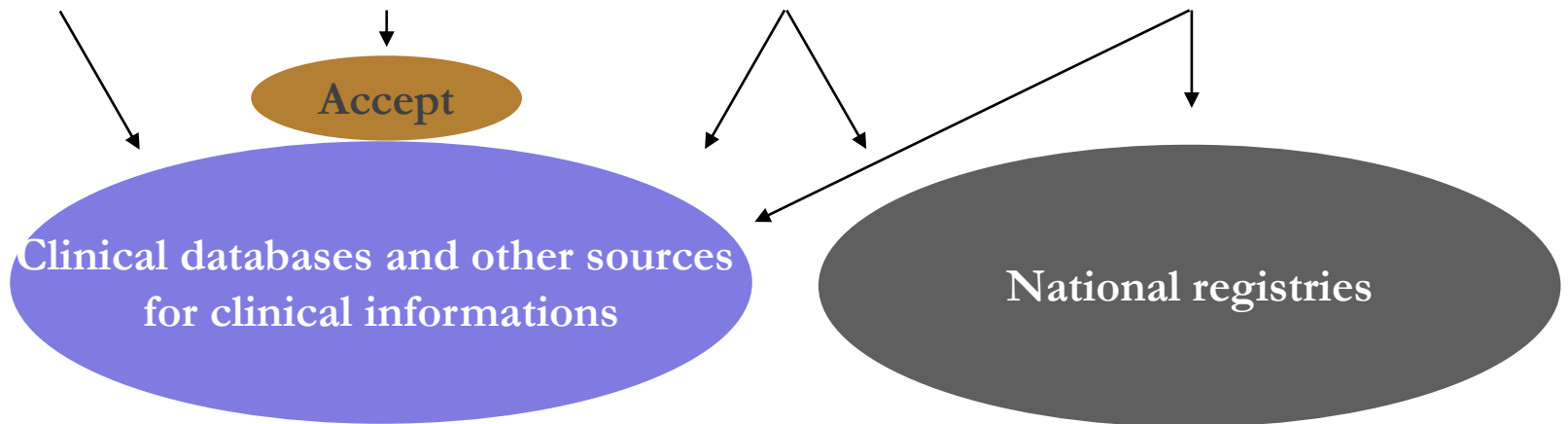


**Collection of biological materials follows National RBGB guideline, High quality specimens**

Requ

Biopsy/ Surgery

January 2013



# Research and RBGB

- 25 % of samples in Danish RheumatologyBiobank is out for use in research projects (**1.694/6.774**)
- 10 % of samples in Danish CancerBiobank is out for use in research projects (**8.245/82.455**)
- 10% of samples in Danish BloddonorBiobank is out for use in a research study (**650/6.899**)



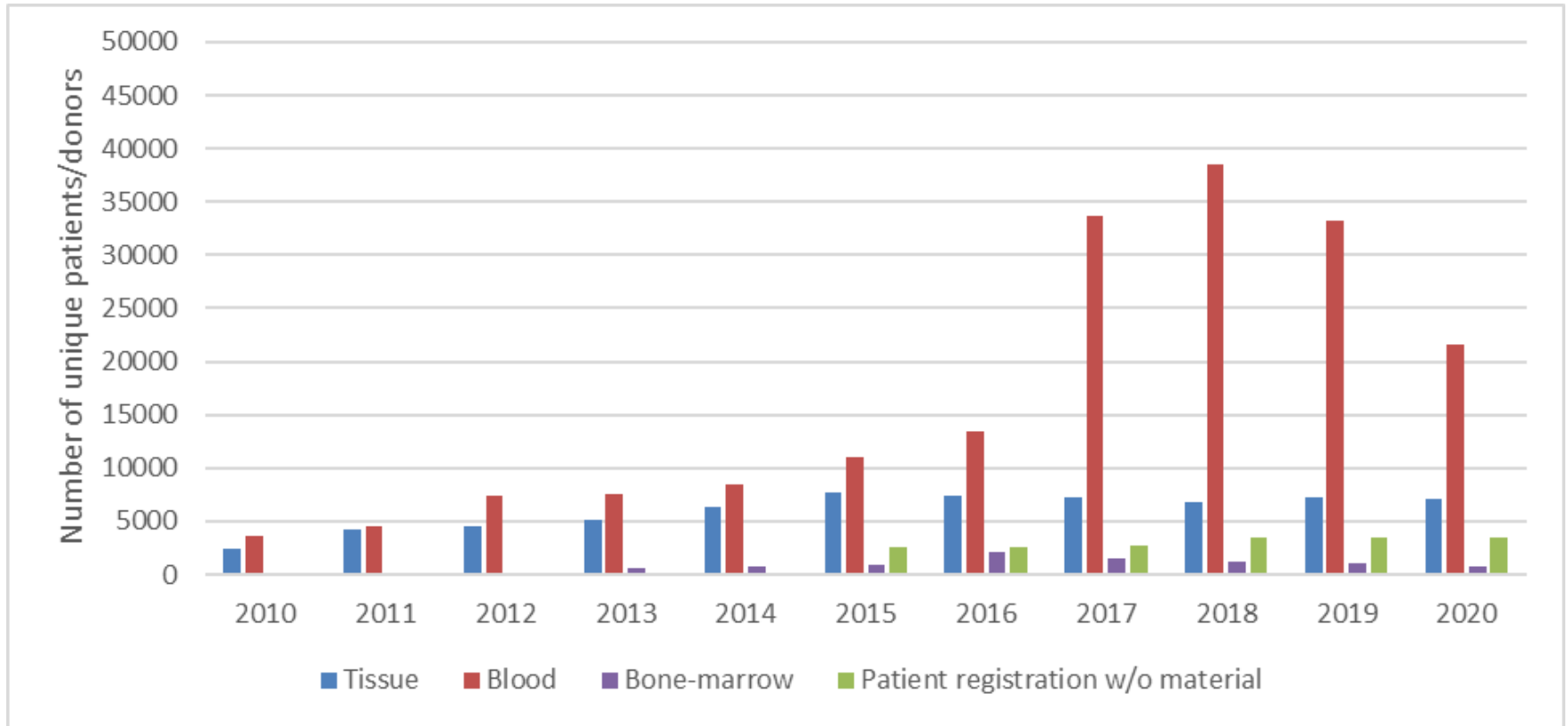


## Examples of gynaecologic studies using biobank materials:

3. Annexin A2 and S100A10 expression as prognostic markers in ovarian cancer: Maria V. Christensen et al. (Australia)
4. Is the biomarker-based index applicable for early detection and correct referral of women at high risk of ovarian cancer in general practice sector: Nikoline Karlsen et al. (DK)
5. miRNA and mRNA in ovarian cancer: Kira Prahm et al. (DK)
8. P53 AAb and ovarian cancer: MDAnderson, USA
9. PD-L1 Expression, Gene Expression Profile, and Survival Among Patients with Advanced Ovarian Cancer: Estrid Hogdall et al. (USA)



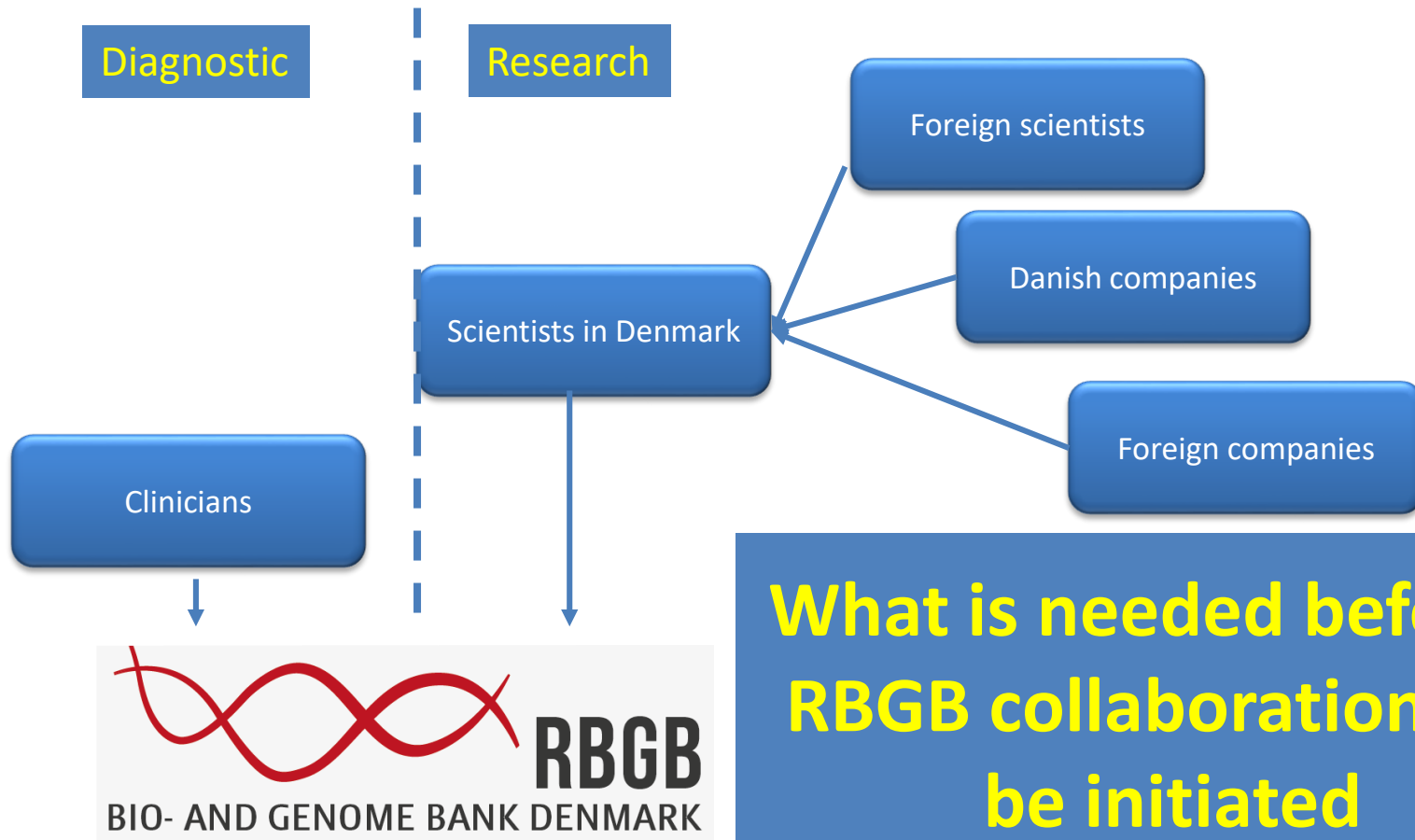
# Annual report 2021 – all biobanks



. **Number of unique patients/donors in RBGB, 2010-2020.** The figure shows the number of unique patients and donors, who have provided tissue (blue), blood (red, incl. hematological blood) and bone marrow (purple) to RBGB from 2010-2020. Patient registration without material (green) refers to patients that have been registered without any biological material.



# Who can gain access for material in RBGB?



**What is needed before a RBGB collaboration can be initiated**



# The Danish National Committee on Health Research Ethics

- Your research project must have an approval from the Committee.

## Other approvals you might need

- Danish Medicines Agency
- The Danish Data Protection Agency

# Contracts to be agreed

- Data Processing Agreement
- Collaboration Agreement
- The (Danish) PI registers the project within our region
- Examples:
  - MiRNA study Ovarian cancer (national project)
  - Project outside DK, but inside EU (endomet)
  - Project with a partner outside EU – USA (PPL1)

## The RBGB secretariat is ready to help -

Contact:

Email:

[RBGB.sekretariat.Herlev-og-Gentofte-hospital@regionh.dk](mailto:RBGB.sekretariat.Herlev-og-Gentofte-hospital@regionh.dk)



Homepage:

<https://www.regioner.dk/rbgben>

